



ADVAIT

BY MANGALMURTI PROCON

LUXURIOUSLY UNIQUE
3 BHK APARTMENTS & SHOPS

"Creating the Tradition of Trust"



MANGALMURTI PROCON

With more than 2 decades of excellence in construction, Mangalmurti Procon, a veteran construction group continues to elevate its stature in the domain by leaps and bounds in Gujarat. With spectacular projects in Ahmedabad, Radhanpur, and Becharaji, the group has collaborated with other dynamic groups to define the architectural skyline of the cities. With it's latest project, the group is seeking to expand its frontiers and push the envelope further.

DEFINING OUR LEGACY ACROSS GUJARAT...

25

Years of
Expertise

57

Well-equipped
Projects

10

Million Sq. Ft.
of Excellence



LET
ELITE LIFESTYLE
BE REDEFINED AND
REDESIGNED
IN UNIQUE SHADES!

RESIDENCE | RELAXATION | RELOCATION


ADVAIT
BY MANGALMURTI PROCON



ADVAIT

Elite Living Standards, Exclusively for You!

Advait is one of the prestigious residential projects with limited edition apartments and a premium location, just 200 Meters away from SG Highway!

Let delight and delirium take over in the charge for a holistic lifestyle.



52

LIMITED EDITION APARTMENTS

52 Apartments | 1 Penthouse | 5 Shops

Towering Heights of Lofty Residences!

Experience Advait reveal a spectacular elevation of towering grace that feature the high echelons of living standards.



RE SUREN



Sensational Homes with Trendy Aesthetics!

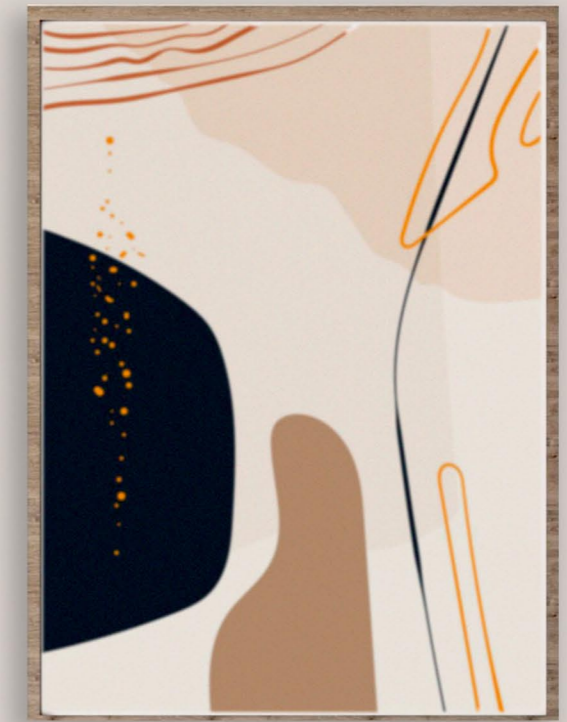
Reside in bliss embracing the goodness of elite lifestyle, letting the rooms play their roles in ensuring holistic happiness.

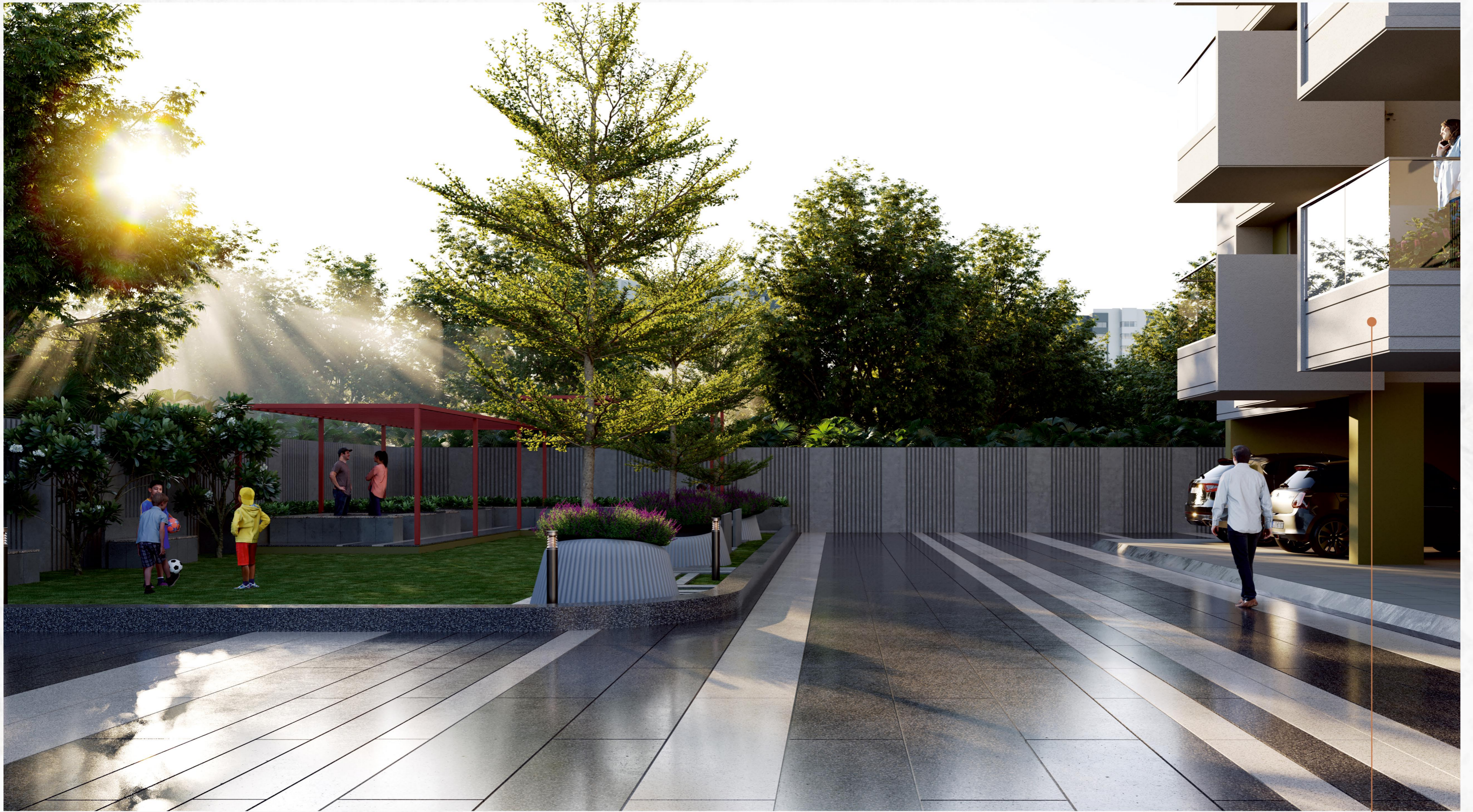


04

PERSONAL FOYER SPACES & ELEVATORS

Unrestricted internal movement and leisure are hallmarks of this project with exclusive elevators and individual foyer reserved for each apartment.





Fascinating Ideals of Spacious Lifestyle!

Breathe in the ambience and the balcony spaces ensuring a lifestyle worth rooting for.

SPACIOUS
BALCONIES

Huge Balconies - **1st Time** in this Segment

02

RELAXATION



Encompassing Environment of Verdant Greens!

Endeavour to reflect on nature's bounty in wholesome spaces, amidst the brilliant amenities surrounding them.



Landscaped
Garden



Children
Play Area



Seating
Area





Enduring Rejuvenation of Physical Well-being!

Revel in the gymnasium and the wellness center to get your physique and your mental makeup in great condition always.



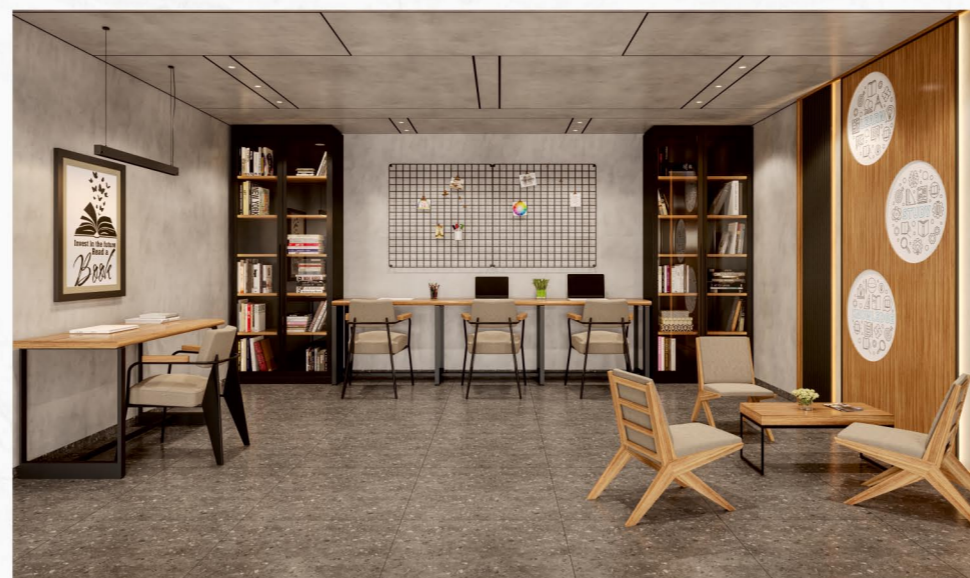
Gymnasium



Library



Indoor Games





Massive Terrace Spaces of Undying Entertainment!

Explore the open terraces for lifestyle activities that deserve your attention and energies for fun and frolic.



Open - Air
Theater



Seating Area



Walk Way



REAL ESTATE LOCATION

Strategic Location of Uniform Connectivity!

Stay connected with the landmarks of the city to enable the benefit of convenience and the privacy of class in equal measure.



CENTRAL LOCATION

Between Science City and S. G. Road
Surrounded by Oxygen Park | AUDA Play Ground



GROUND FLOOR PLAN



18.0 Mt. Wide Road

1ST FLOOR PLAN



TYPICAL FLOOR PLAN

2ND TO 13TH FLOOR PLAN

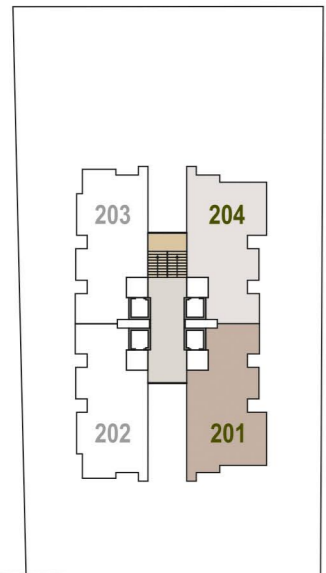
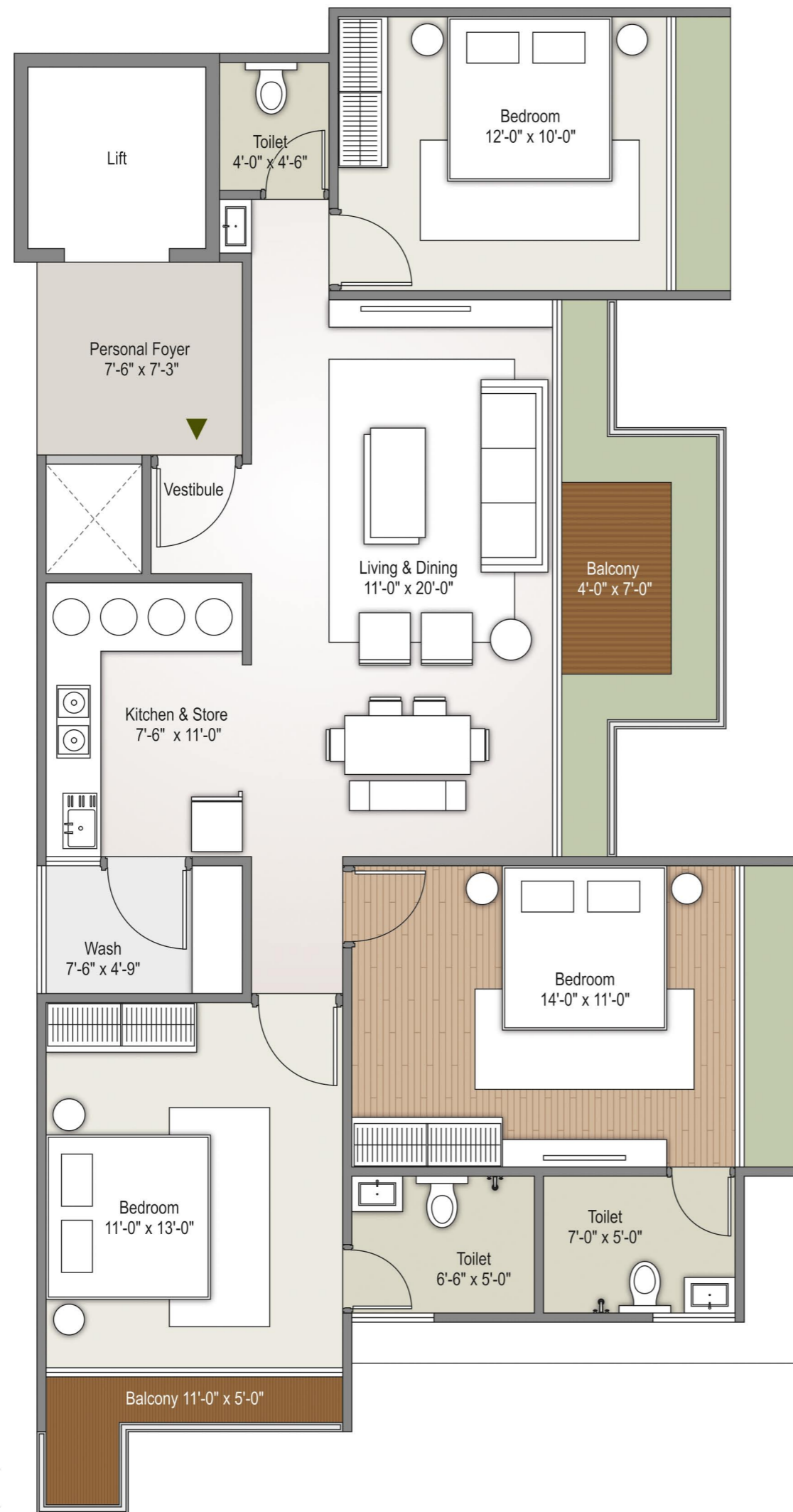


14TH FLOOR PLAN



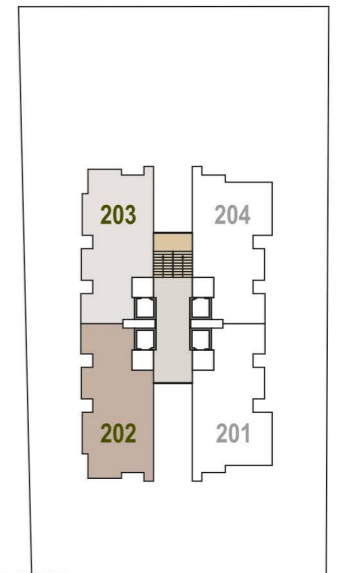
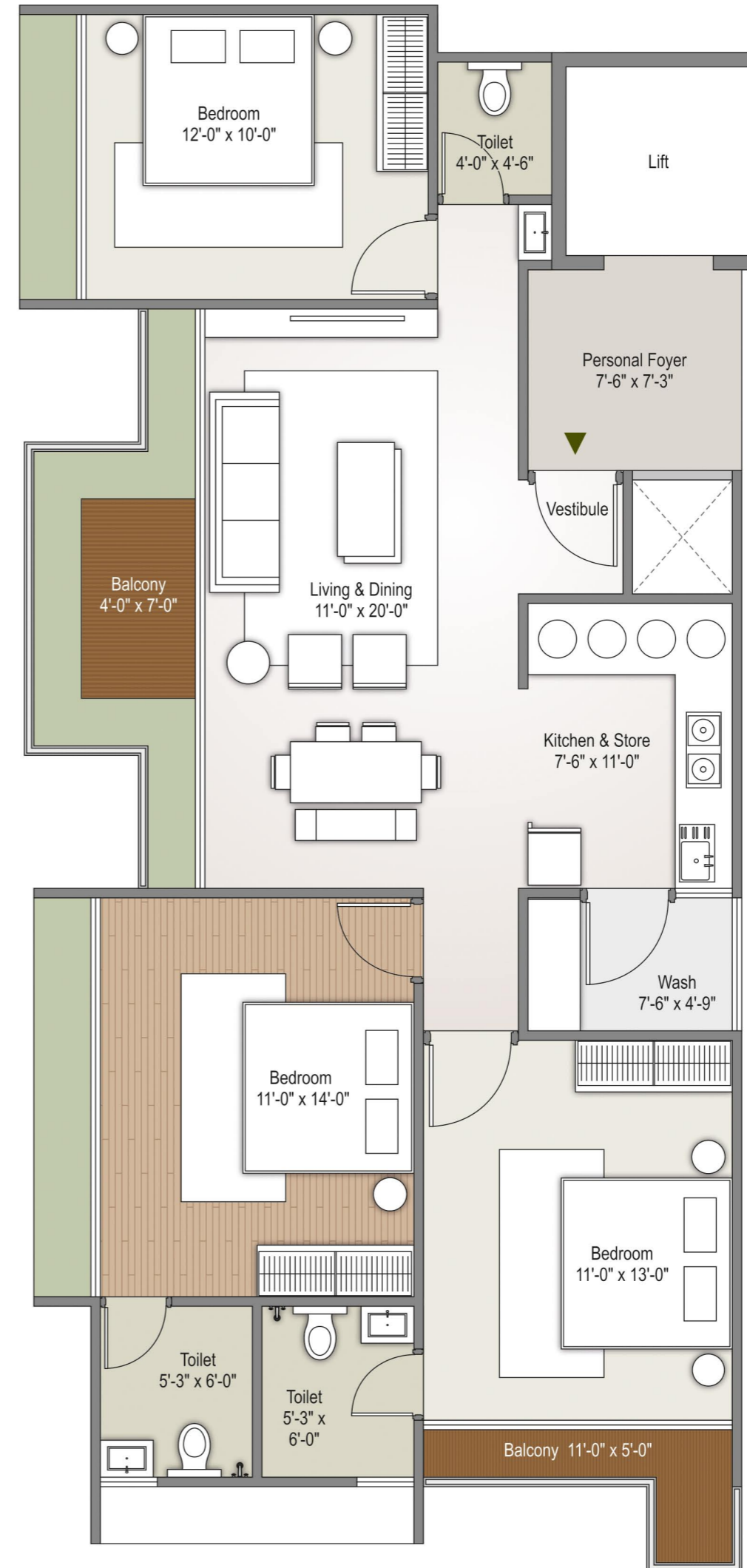
UNIT PLAN

TYPE - 01



UNIT PLAN

TYPE - 02



SPECIFICATIONS



STRUCTURE

RCC frame structure, outside double coat plaster with texture, inside mala plaster finish.



ELECTRIFICATION

Concealed copper wiring and modular switches of standard company.



PAINT

All exterior walls with acrylic paint and all interior walls with white putty.



KITCHEN

Standard quality polished granite or stone in platform with S.S Sink of standard quality.



FLOORING

Standard Vitrified tiles.



WINDOWS

Aluminium section Windows.



DOOR

Doors are flush door with Wooden frame.



TOILET/BATHROOMS

Designer tiles in all toilet up to lintel level with standard C.P fittings, and standard quality of sanitary ware

TERMS & CONDITIONS: All the architectural and interior images in the brochure, are merely simulated interpretations using computer graphics to enhance the customer understanding and are not factual images. • The colour and general appearance of the flooring and wall tiles, sanitary ware & fittings, walls, ceilings, windows, doors, internal roads, trees, shrubbery etc. shown in the simulated computer graphics images are taken from the object libraries for the purpose of presentation and the prospective buyers of the concerned property are advised to refer to the construction specifications mentioned in the brochure. Additional amenities and/ or utilities not mentioned or shown in the brochure but may be required as per the law, should be deemed to be forming part of the project by the purchaser. • All Furniture including wardrobes, other sofa furnishings inter-alia curtains, mattresses, bed linen, upholstery etc., lights and other electrical fixtures and appliances like air conditioners, refrigerators, TV's, telephones, laptops etc., any of the equipment, household accessories inter-alia crockery and cutlery, rugs, carpets, decorative pieces and wall hangings, wall papers, utensils etc., apparels and all other consumable and movable items shown in the simulated images do not form part of the sale of any property by the developer. • All dimensions presented herein are approximate and the measurements are made from unfurnished surfaces. • All rights reserved with the developers to make any changes in the project and all the members shall abide by such changes. • GST, AMC/ AUDA charges along-with GEB/ Torrent electrical charges including cable and Sub-station cost shall be borne by purchaser. • Stamp duty, registration charges, or any other charges and taxes as & when levied by government or any of its body shall be borne by purchaser/buyer/legal possession holder. • GST at applicable rate is payable on the due amount and is non refundable. • This brochure is for restricted private circulation only and is for an easy display of the project. It should not to be considered as a legal document with obligations for specific performance. It is meant for the purpose of conceptual presentation only. • Subject to Ahmedabad Jurisdiction only.



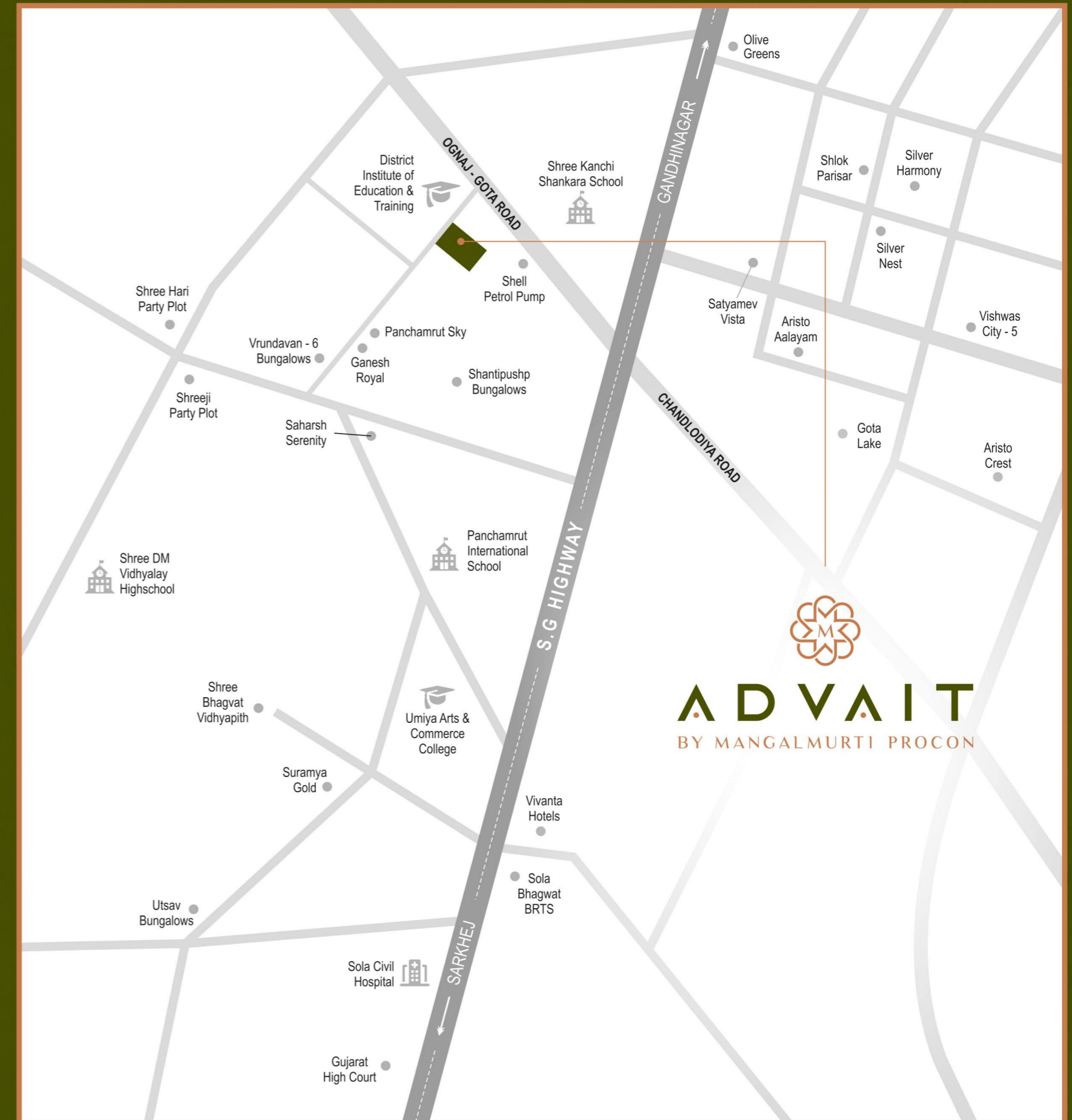
RERA REGISTRATION NO.: PR/GJ/AHMEDABAD/AHMEDABAD CITY/AUDA/MAA10929/141122

RERA WEBSITE: www.gujrerar1.gujarat.gov.in



LOCATION

NOT TO SCALE



PROJECT BY


MANGALMURTI
PROCON

SITE ADDRESS

Near Panchamrut Sky, B/h. Shell Petrol Pump
Off. Gota - Ognaj Road, New Science City Road
Ahmedabad - 382481.

Call: +91 70 3030 6080 | +91 90 9040 7080

ARCHITECT

UA DESIGN

MEMBER OF

GUJARAT

Designed by:
Openmind 97270 33377

PROJECT BY



MANGALMURTI
PROCON